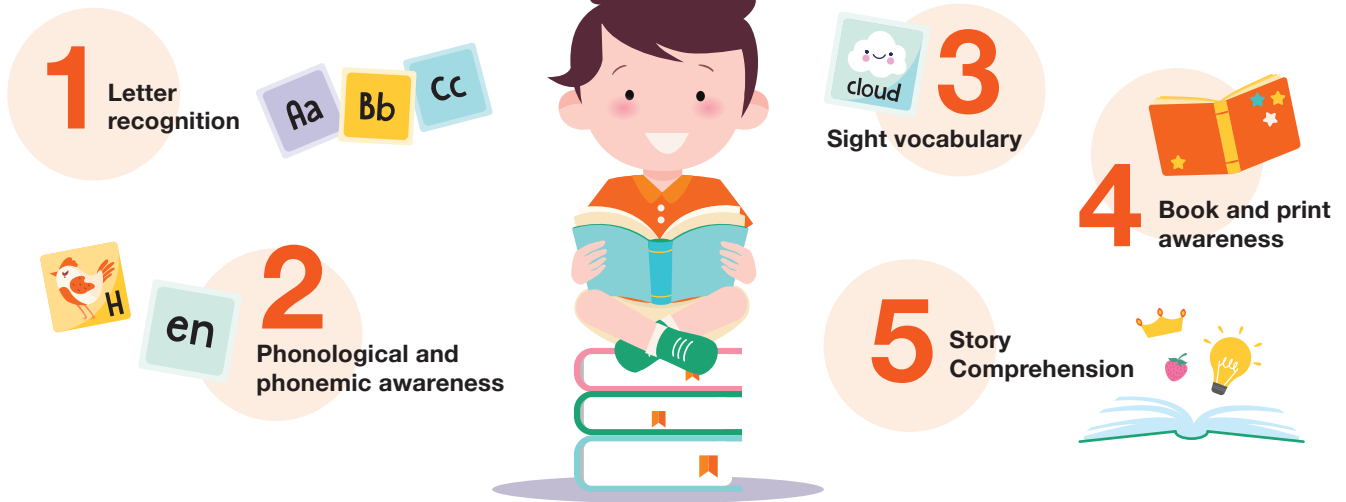


# READ-TO-REACH PROGRAMME

This small-group programme is for K1 children who require additional language and literacy support.

The programme gives children a stronger foundation in literacy through teaching:



## ELIGIBILITY



1

Household income  $\leq$  \$4,500 or \$1,125 per capita income (for households with 5 or more members)



2

K1 children who have been identified through the screening exercise

## HOW IT WORKS

- 1 Nursery Teachers will conduct screening exercise.
- 2 Parents will be informed by Centre Principal
- 3 Parents will receive programme letter and consent form
- 4 Parents to return signed consent form within **7 days**
- 5 Withdrawal from the programme requires minimum **30 days** written notice

### NOTE

Bright Horizons Fund reserves the right to withdraw children who

- are absent from school for a prolonged period of time
- may require higher support

## FAQ

- Q** What is the duration of the Read-to-REACH programme?
- A** There will be 60 lessons covered over the course of 4 months.
- 
- Q** Can my child join the programme after it has started?
- A** No, this programme adopts a sequential approach, building on previously taught content. Children who have missed the earlier lessons will not be able to benefit from the programme.
- 
- Q** How are the lessons conducted?
- A** Lessons are carried out in small groups of 3 – 6 children.